

ISO 15552 CYLINDER Ø 250-320

Cylinders made to ISO 15552 available in various versions and with a wide range of accessories:

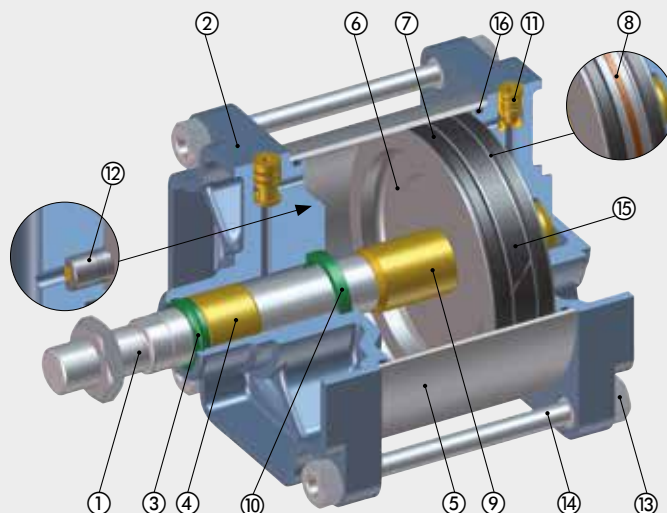
- double-acting – single- or through-rod
- with or without cushioning
- configuration with or without magnet
- with NBR gaskets, and polyurethane gasket for the piston rod only
- with FKM/FPM gaskets (high temperature versions)
- available with mounted intermediate hinge
- special configurations on request



TECHNICAL DATA		Ø250	Ø320
Max operating pressure	bar		10
	MPa		1
	psi		145
Temperature range	NBR °C		-20 to +80
	FKM/FPM °C		-10 to +150
Design		Round barrel with tie rods	
Fluid		Unlubricated air. Lubrication, if used, must be continuous	
Standard strokes	mm	1 to 2000	
Versions		Double-acting, Cushioned or non-cushioned, Single piston rod or cushioned through piston rod, High-temperature, No stick-slip Available magnetic and non-magnetic versions.	
Sensor magnet			
Inrush pressure	bar	0.2	0.15
Forces generated at 6 bar thrust/retraction		See cylinder "General technical data" at the beginning of the chapter	
Weights		See cylinder "General technical data" at the beginning of the chapter	
Notes		For speeds lower than 0.2 m/s to prevent surging, use the version No stick-slip and non-lubricated air.	

COMPONENTS

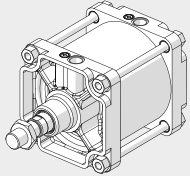
- PISTON ROD: High thickness C45 chrome steel or stainless steel (AISI 304)
- HEAD: fused aluminum painted
- PISTON ROD GASKET: polyurethane or FKM/FPM
- GUIDE BUSHING: sintered bronze
- BARREL: anodized aluminium
- PISTON: aluminium
- PISTON GASKET: NBR or FKM/FPM
- MAGNET: plastoferrite
- CUSHIONING CAP: aluminium
- CUSHIONING GASKET: NBR or FKM/FPM
- CUSHIONING NEEDLE: OT 58
- ONE-WAY VALVE for Ø 320 only: to speed up restart from end of stroke, bypassing the cushioning gasket
- SCREWS: zinc-plated steel
- TIE RODS: C45 steel, chromed
- GUIDE BELT: PTFE
- STATIC O-RINGS: NBR or FKM/FPM



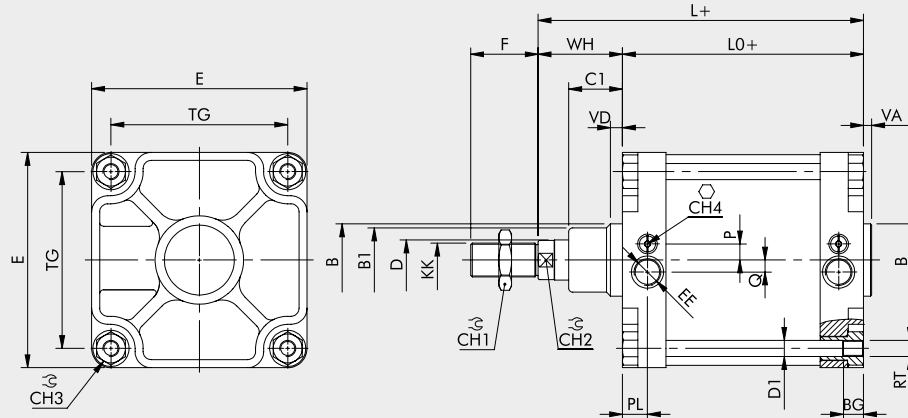
DIMENSIONS

STANDARD VERSION

+ = ADD THE STROKE

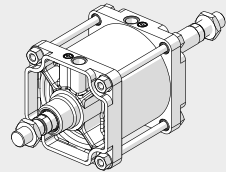


- W120
- W121
- W124

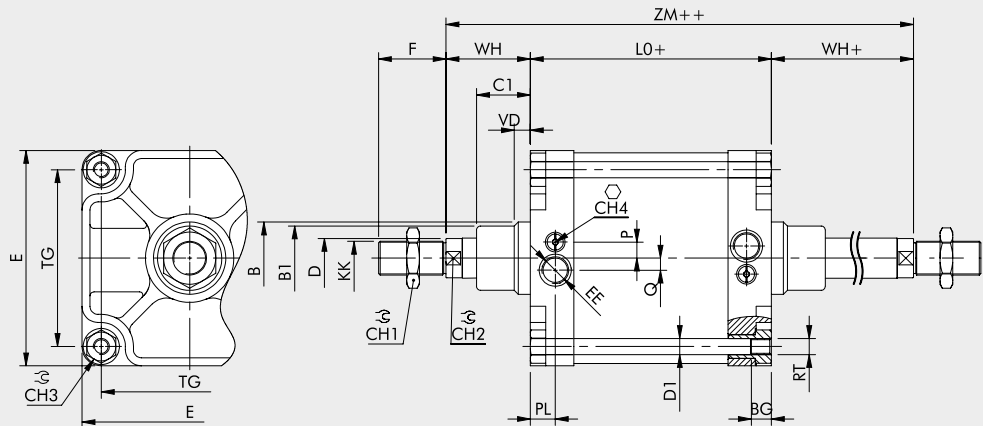


THROUGH-ROD VERSION

+ = ADD THE STROKE
 ++ = ADD TWICE THE STROKE



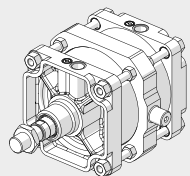
- W122
- W123



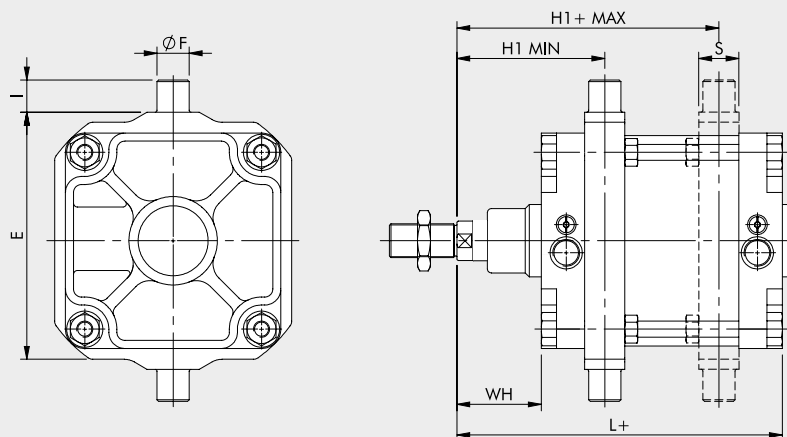
Ø	PL	VD	B	B ₁	WH	C ₁	CH ₁	CH ₂	CH ₃	CH ₄	KK	D	D ₁	TG	VA	EE	RT	E	L	L ₀	ZM	BG	P	Q	
250	31	20	90	80	105	67	65	46	36	6	M42x2	50	20	220	10	84	G1	M20	268	305	200	410	25	15	20
320	31	20	110	100	120	82	75	55	46	6	M48x2	63	25	270	10	96	G1	M24	340	340	220	460	28	36	-

DIMENSIONS OF VERSION WITH INTERMEDIATE HINGE

+ = ADD THE STROKE



- W120
- W121
- W124



Ø	E	ØF	H1 _{min}	H1 _{max}	I	L	WH	S
250	320	40	184	226	40	305	105	50
320	400	50	212	248	50	340	120	70

For the missing values, refer to standard cylinders. In your order, please specify the desired value for H1

KEY TO CODES

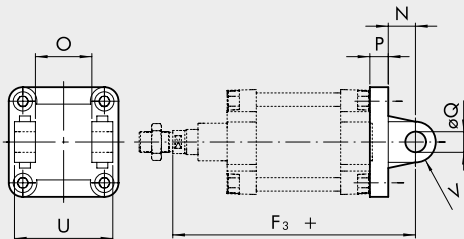
CIL	W 1 2 1 TYPE	2 5 0 DIAMETER-EXECUTION	0 3 0 0 STROKE	0 2 0 0 EXECUTION
W120	Double-acting, cushioned, non magnetic	250 250 320 320	0001 to 2000 mm	Specify H1 value ONLY for version with intermediate hinge
W121	Double-acting, cushioned	XA5 250 stainless steel piston rod and nut		
W122	Double-acting, cushioned, through-rod	XA6 320 stainless steel piston rod and nut		
W123	Double-acting, cushioned, through-rod, non magnetic	KA5 250 FKM/FPM gasket, C45 piston rod and nut		
W124	Double-acting, non-cushioned	VA5 250 FKM/FPM gasket, stainless steel piston rod and nut		
		AA5 250 + intermediate hinge AA6 320 + intermediate hinge		
		● GA5 250 no stick-slip ● GA6 320 no stick-slip		

● For speeds lower than 0.2 m/s, to prevent surging. Use no-lubricated air only.

ACCESSORIES: FIXINGS

FEMALE HINGE - MODEL B

+ = ADD THE STROKE

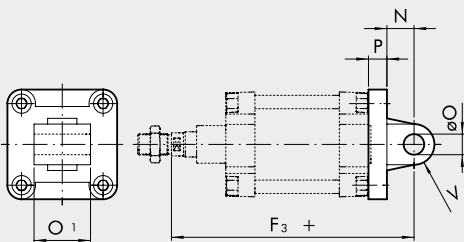


Code	Ø	U	O	øQ	P	N	F ₃	V	Weight [g]
W0952502003	250	200	110	40	25	45	375	40	7600
W0953202003	320	220	120	45	30	50	420	45	13200

Note: Supplied complete with 4 screws, 2 snap rings and 1 pin

MALE HINGE - MODEL BA

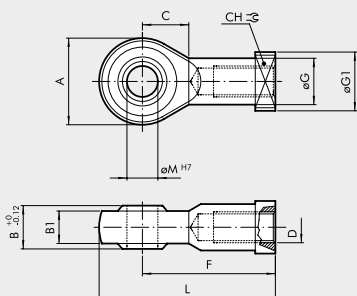
+ = ADD THE STROKE



Code	Ø	O ₁	øO	P	N	F ₃	V	Weight [g]
W0952502004	250	110	40	25	45	375	40	5910
W0953202004	320	120	45	30	50	420	45	10900

Note: Supplied complete with 4 screws

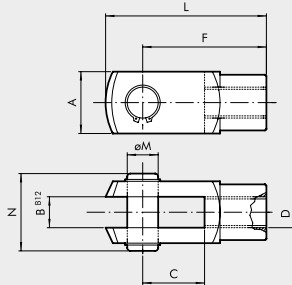
ROD EYE - MODEL GA-M



Code	Ø	øM	C	B ₁	B	A	L	F	D	øG	CH	øG ₁	Weight [g]
W0952502025	250	40	45	33	49	102	193	142	M42x2	56	55	69	2800
W0953202025	320	50	60	45	60	117	218.5	160	M48x2	66	65	75	5000

Note: Individually packed

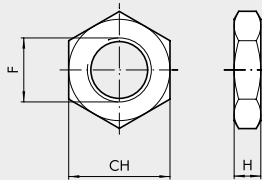
FORK - MODEL GK-M



Code	Ø	ØM	C	B	A	L	F	D	N	Weight [g]
W0952502020	250	42	84	42	85	232	168	M42x2	102	6400
W0953202020	320	50	96	50	95	265	192	M48x2	113	9600

Note: individually packed with 2 seeger and 1 pin

ROD NUT - MODEL S



ZINC-PLATED STEEL

Code	Ø	F	H	CH	Weight [g]
W0952502010	250	M42x2	16	65	285
W0953202010	320	M48x2	18	75	420

Note: Individually packed

STAINLESS STEEL (AISI 304)

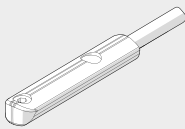
Code	Ø	F	H	CH	Weight [g]
W095XA52010	250	M42x2	16	65	285
W095XA62010	320	M48x2	18	75	420

Note: Individually packed

ACCESSORIES: MAGNETIC SENSORS

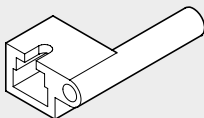
RETRACTABLE SENSOR

SENSOR, OVAL TYPE
Traditional



For codes and technical data, see [chapter A6](#).

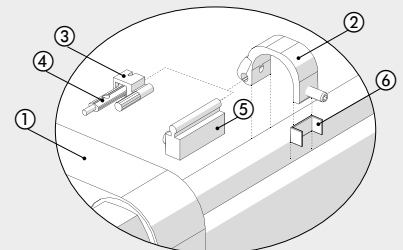
ADAPTOR FOR RETRACTABLE SENSOR



Code	Description
W0950001001	Adaptor DSS005 for DST/ST brackets

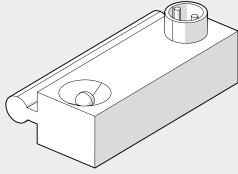
ASSEMBLY DIAGRAM

- ① ISO 15552 cylinder, round pipe with tie rods
- ② Sensor bracket mod. ST (Ø 250 and 320)
- ③ Adaptor for retractable sensor
- ④ Retractable sensor
- ⑤ Sensor DSM
- ⑥ Adaptor (only for Ø 250)



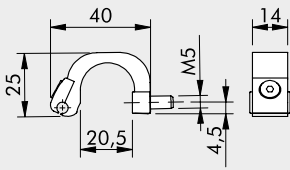
SENSOR SERIES DSM

For codes and technical data, see **chapter A6**.



SENSOR SUPPORT BRACKET

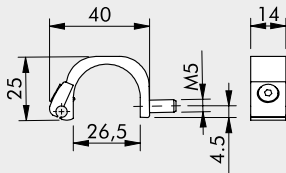
Ø 250



Code
W0950000722

Description
Bracket ST250

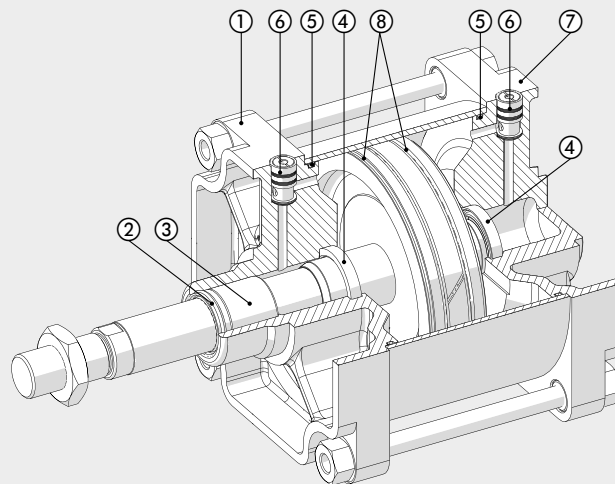
Ø 320



Code
W0950000723

Description
Bracket ST320

SPARE PARTS



Code	Bores	Type	Parts
W095 ... 2101	250 - 320	Complete set of gaskets	2-4-5-8
W0952502102	250	Complete set of (high temperature) FKM/FPM gaskets	2-4-5-8
W095 ... 0104	250 - 320	Complete front head kit	1-2-3-4-5-6
W095 ... 0105	250 - 320	Complete rear head kit	4-5-6-7