

PRECISION PRESSURE REGULATOR WITH HIGH EXHAUST FLOW, SERIE GS

GS is a series of precision regulators, designed for rapid relief of overpressure and a high flow rate. They feature identical and opposing regulation valves on the inlet and outlet sides. This enables the regulator to behave symmetrically – precise regulation with a high rate of flow both in and out. The pressure setting is virtually insensitive to changes in the upstream pressure (see diagram below), which guarantees accuracy even when the mains pressure fluctuates considerably. A slight escape of air is required for correct operation of the regulator – it must not be considered a defect. The regulator can be fixed using the through holes in the body or a bracket accessory. The body has a 1/8" pressure gauge fitting. GS regulators are suitable for applications requiring good accuracy in maintaining the pressure and a certain sensitivity in relieving pressure peaks, e.g. to supply low-friction cylinders, reel tensioners and coil winders. Two sizes of compressed air fitting are available: 1/8" and 1/4". Three different setting ranges are available: 0 to 2 bar, 0 to 4 bar and 0 to 8 bar.

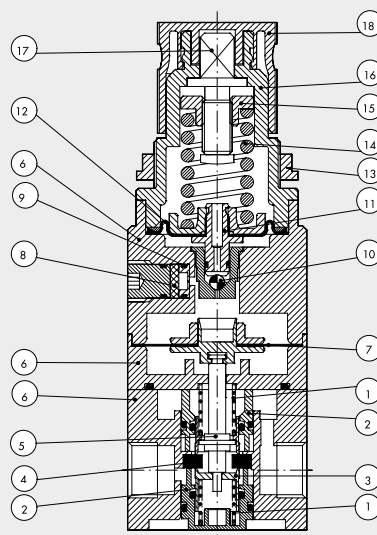


TECHNICAL DATA

		1/8"	1/4"
Threaded port		1/8"	1/4"
Setting range	bar	0 to 2 - 0 to 4 - 0 to 8	
Max. input pressure	bar	10	
Flow rate at 6.3 bar ΔP 0.5 bar	l/min	900	1170
Flow rate at 6.3 bar ΔP 1 bar	l/min	1200	1380
Fluid		Unlubricated filtered air	
		The air must be at least 10 µm pre-filtered	
Temperature range	°C	From -10 to +50	
Mounting position		In any position	
Pressure gauge port		G 1/8"	
Weight	g	600	
Exhaust flow rate at 4 bar (regulated pressure)			
ΔP 0.1 bar	l/min	450	810
ΔP 0.5 bar	l/min	900	1190
Variation in regulated pressure (2 bar) with changes in upstream pressure (4-10 bar)	mbar	± 20	
Relieving sensitivity	mbar	30	
Air consumption – continuous escape	l/min	< 0.1	
Notes		The regulator pressure must always be set upwards.	
		For increased sensitivity, use a pressure regulator with a rated pressure as close as possible to the required value.	
		Do not take air from pressure gauge ports.	

COMPONENTS

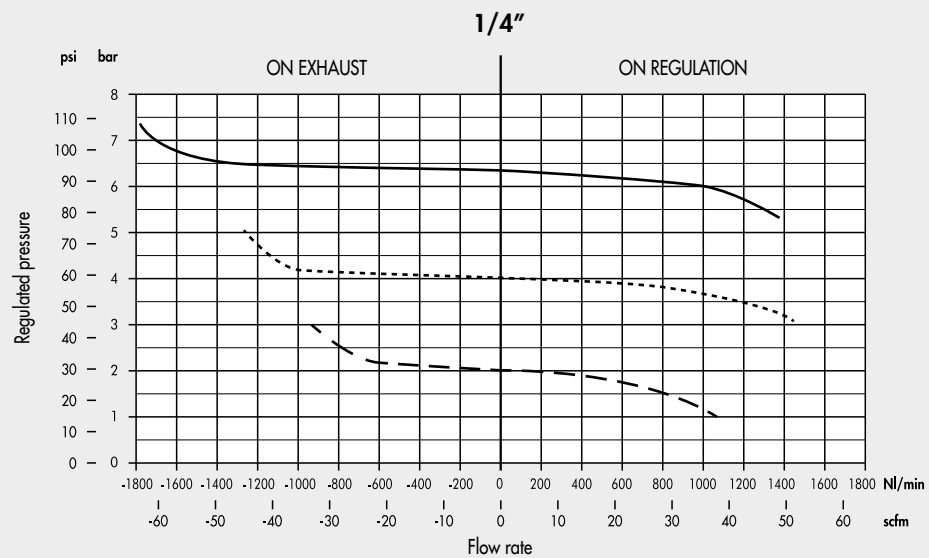
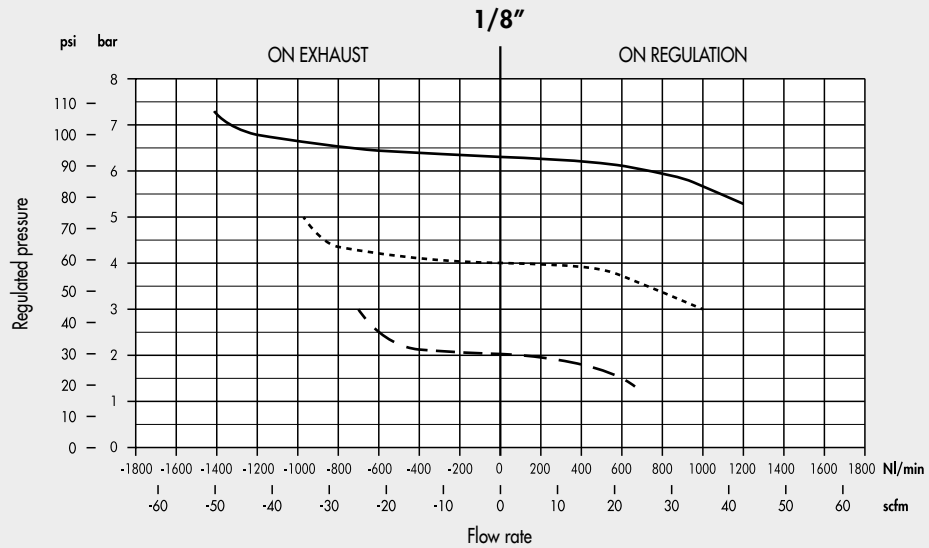
- ① Spring: stainless steel
- ② Cartridges: nickel-plated brass
- ③ Poppet: nickel-plated brass
- ④ Ring: vulcanized NBR
- ⑤ Control lever: brass
- ⑥ Bodies: painted aluminium
- ⑦ Control diaphragm: oil-proof rubber
- ⑧ Filter: sintered bronze
- ⑨ Throttle cartridge: brass
- ⑩ Ball: stainless steel
- ⑪ Ball valve: brass
- ⑫ Regulation diaphragm: NBR
- ⑬ Ring nut: technopolymer
- ⑭ Adjusting spring: steel
- ⑮ Scroll: brass
- ⑯ Bell: technopolymer
- ⑰ Adjusting screw: brass
- ⑱ Knob: technopolymer



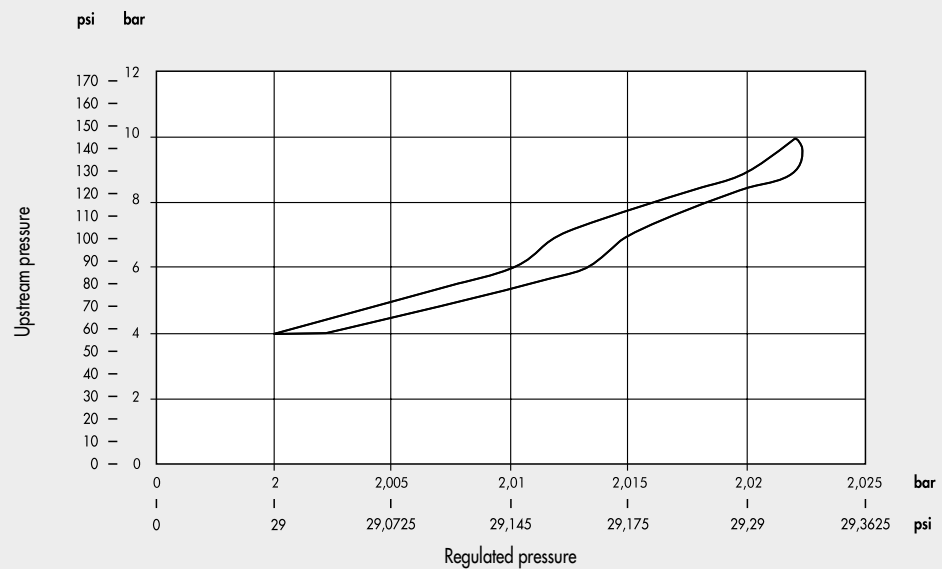
FLOW RATE

Upstream pressure = 10 bar

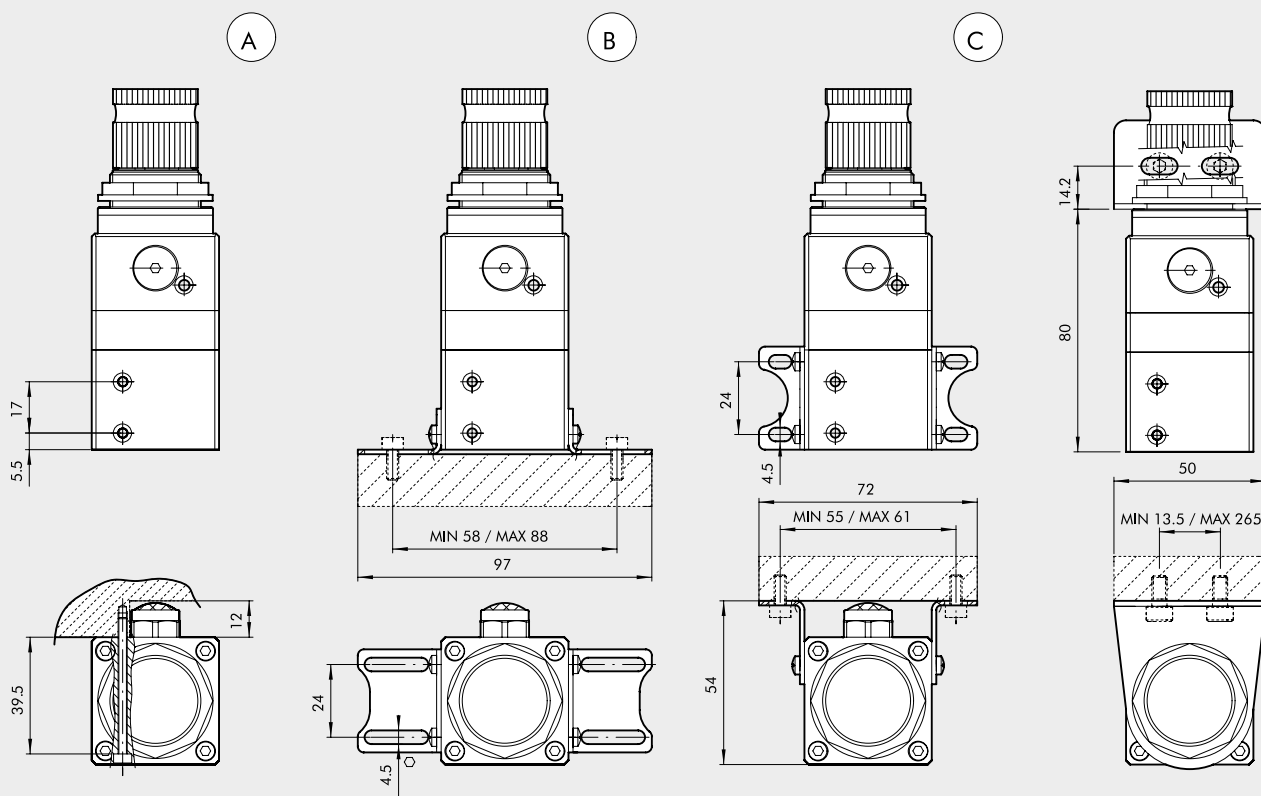
- P_{reg} = 2 bar
- P_{reg} = 4 bar
- P_{reg} = 6.3 bar



UPSTREAM PRESSURE SENSITIVITY

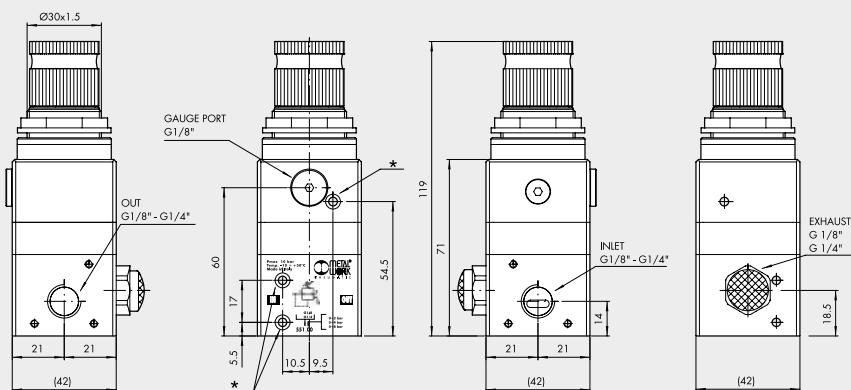


INSTALLATION



- Ⓐ On the wall with 2 M3 hex screws
- Ⓑ On the base with legs code 9200710
- Ⓒ On the wall with legs code 9200710
- Ⓓ On the wall with bracket code 9200701

DIMENSIONS



* M3 hole

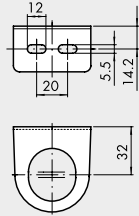
Code	Description
5511200	REG. GS 1/8 02
5511300	REG. GS 1/8 04
5511400	REG. GS 1/8 08
5512200	REG. GS 1/4 02
5512300	REG. GS 1/4 04
5512400	REG. GS 1/4 08

ACCESSORIES

SPARES PARTS

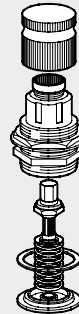
P N E U M A T I C

R/FR FIXING BRACKET



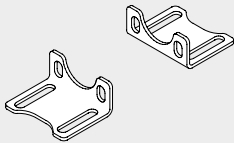
Code	Description
9200701	SF100 - BIT - ND 1/4 - SY1

UPPER COVER FOR REG GS



Code	Description
9250835	SPARES CS REG GS 02
9250836	SPARES CS REG GS 04
9250837	SPARES CS REG GS 08

FIXING BRACKET KIT

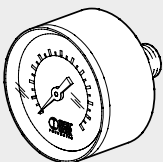


Code	Description
9200710	Fixing bracket kit

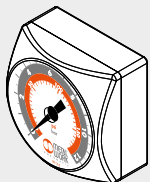
N.B. supplied complete with four M4X6 screws

NOTES

PRESSURE GAUGE



Code	Description
9700102	M 40 1/8 04
9700101	M 40 1/8 012



9700109	M 40x40 1/8 04
9700110	M 40x40 1/8 012