

VALVES NAMUR



TECHNICAL DATA

Operating pressure:			
• monostable, electric	bar	2.5 to 10	
• bistable, electric	bar	1 to 10	
• pilot-assisted, electric	bar	Vacuum to 10	
Minimum actuation pressure:			
• monostable, pneumatic	bar	2.5	
• bistable, pneumatic	bar	1	
Operating temperature range			
	°C	-10 to +60	
Nominal diameter			
	mm	7.5	
Conductance C			
	Nl/min · bar	264.26	
Critical ratio b			
	bar/bar	0.27	
Flow rate at 6 bar ΔP 0.5 bar			
	Nl/min	750	
Flow rate at 6 bar ΔP 1 bar (0.1 Mpa - 14.5 psi)			
	Nl/min	1100	
Response time at 6 bar:			
• TRA/TRR monostable, pneumatic at 6 bar	ms	7 / 15	
• TRA/TRR bistable, pneumatic at 6 bar	ms	7 / 7	
• TRA/TRR monostable electric at 6 bar	ms	19 / 45	
• TRA/TRR bistable electric at 6 bar	ms	21 / 21	
Compatibility with oils			
		See chapter Z1	

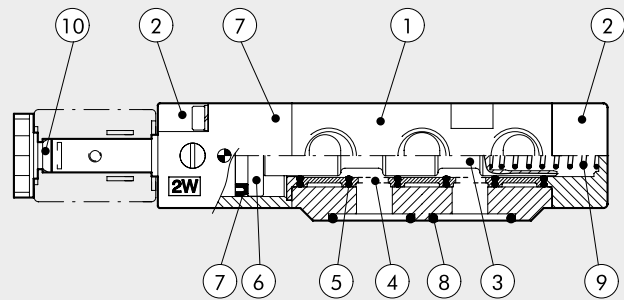


SYNOPTIC, SIZES AND VERSIONS

P N V		A	5	P N		S	O O
FAMILY		DIMENSIONS	FUNCTION		OPERATORS 14	RESETTING (12)	FURTHER DETAILS
PNV	pneumatic	A NAMUR	5	5/2	PN	pneumatic	OO no indication
SOV	electro-pneumatic		4	4/2	SO	solenoid	NC normally closed

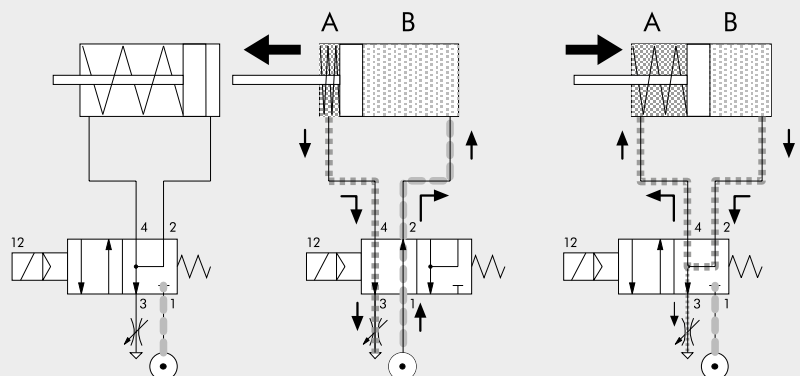
COMPONENTS

- ① VALVE BODY: Aluminium
- ② CONTROL/BASE: Hostaform®
- ③ SPOOL: chemically nickel-plated aluminium
- ④ DISTANCE PLATES: plastic
- ⑤ GASKETS: NBR nitrile rubber
- ⑥ PISTONS: Hostaform®
- ⑦ PISTON GASKET: NBR nitrile rubber
- ⑧ INTERFACE GASKETS: NBR nitrile rubber
- ⑨ SPRINGS: special steel
- ⑩ OPERATOR: Brass pipe – Stainless steel core

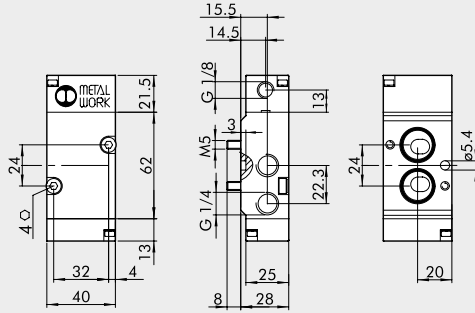


FUNCTIONING DIAGRAM 4/2 NAMUR VALVE

During the piston retraction stage, the air for chamber A is taken from the air leaving chamber B. This prevents the dirty air from getting in from the outside environment.

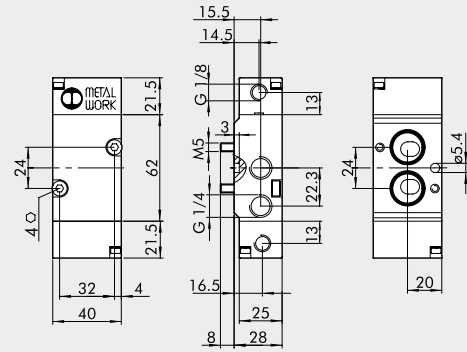


MONOSTABLE, PNEUMATIC 4/2



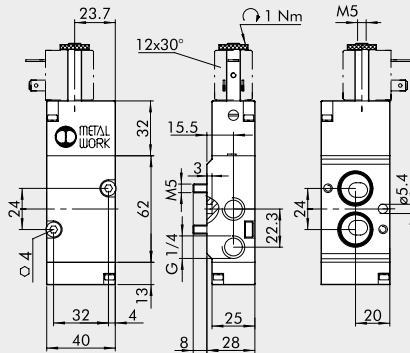
Symbol	Code	Abbrev.	Weight [g]
	7021010110	PNV A4 PNS NC	208

BISTABLE, PNEUMATIC 4/2



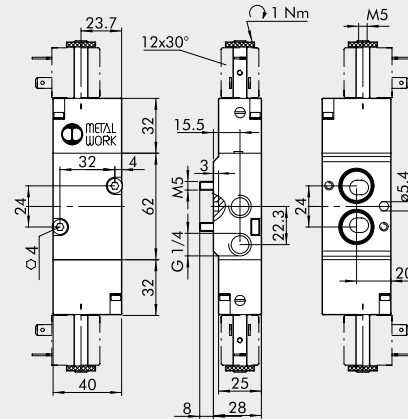
Symbol	Code	Abbrev.	Weight [g]
	7021010210	PNV A4 PNB OO	216

MONOSTABLE, SOLENOID/PNEUMATIC 4/2



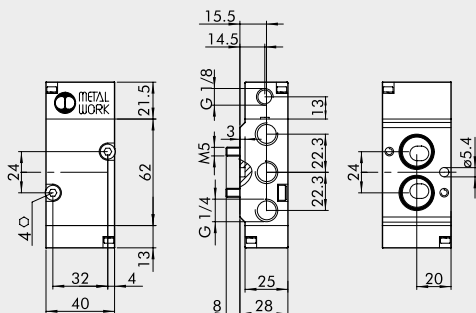
Symbol	Code	Abbrev.	Weight [g]
	7021020110	SOV A4 SOS NC	234

BISTABLE, SOLENOID/PNEUMATIC 4/2



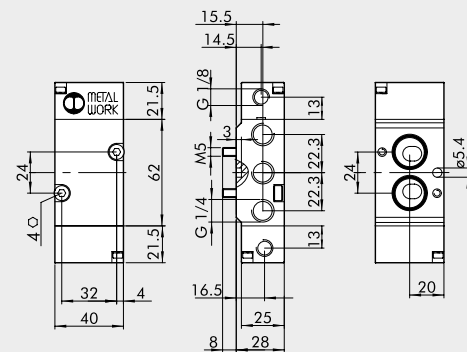
Symbol	Code	Abbrev.	Weight [g]
	7021020210	SOV A4 SOB OO	270

MONOSTABLE, PNEUMATIC 5/2



Symbol	Code	Abbrev.	Weight [g]
	7021010100	PNV A5 PNS OO	208

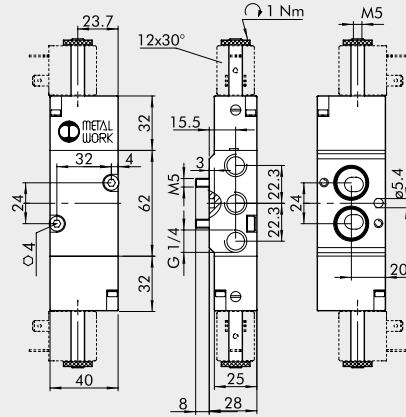
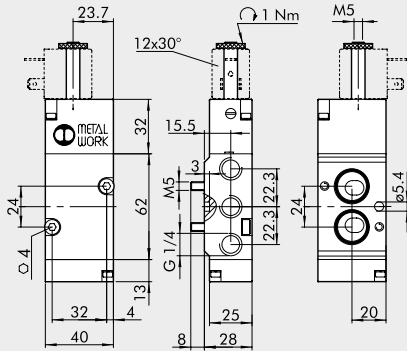
BISTABLE, PNEUMATIC 5/2



Symbol	Code	Abbrev.	Weight [g]
	7021010200	PNV A5 PNB OO	216

MONOSTABLE, SOLENOID/PNEUMATIC 5/2

BISTABLE, SOLENOID/PNEUMATIC 5/2



Symbol	Code	Abbrev.	Weight [g]
	7021020100	SOV A5 SOS OO	234

Symbol	Code	Abbrev.	Weight [g]
	7021020200	SOV A5 SOB OO	270

ACCESSORIES FOR NAMUR VALVES SOV, SOLENOID/PNEUMATIC

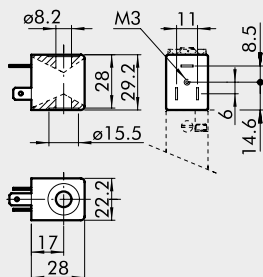
Refer to page B1.60 for coils and connectors



NOTES

COILS AND CONNECTORS FOR SERIES 70, NAMUR AND SERIES BASIC VALVES

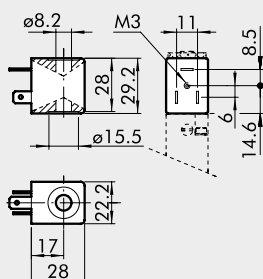
COILS SIDE 22 mm



- Voltage tolerance: -10% + 15%
- Insulation class: F155
- Degree of protection: IP65 DIN 40050 with connector
- Avoid prolonged exposure to atmospheric agents
- Coil temperature 100% ED:
55°C at 20°C ambient temperature
- According to Atex 2014/34/EU rule, group 2, category 3 GD

Code	Abbrev.	Nominal voltage	Absorption	
			Inrush	Holding
W0215000151	Coil 22 Ø 8 BA 2W-12VDC	12Vcc	2W	2W
W0215000101	Coil 22 Ø 8 BA 2W-24VDC	24Vcc	2W	2W
W0215000111	Coil 22 Ø 8 BA 3.5VA-24VAC	24V 50/60Hz	5.3VA	3.5VA
W0215000121	Coil 22 Ø 8 BA 3.5VA-110VAC	110V 50/60Hz	5.3VA	3.5VA
W0215000131	Coil 22 Ø 8 BA 3.5VA-220VAC	220V 50/60Hz	5.3VA	3.5VA

"UL" AND "CSA" COILS 22 mm

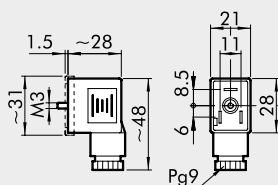


- Voltage tolerance: -10% to + 15%
- Insulation class: F155
- Degree of protection: IP65 EN60529 with connector
- Avoid prolonged exposure to the atmospheric agents
- Coil temperature 100% ED:
55°C at 20°C ambient temperature

Code	Abbrev.	Nominal voltage	Absorption	
			Inrush	Holding
W0215000251	Coil 22 Ø 8 BA 2W-12VDC UR	12Vcc	2W	2W
W0215000201	Coil 22 Ø 8 BA 2W-24VDC UR	24Vcc	2W	2W
W0215000211	Coil 22 Ø 8 BA 3.5VA-24VAC UR	24V 50/60Hz	5.3VA	3.5VA
W0215000221	Coil 22 Ø 8 BA 3.5VA-110VAC UR	110V 50/60Hz	5.3VA	3.5VA
W0215000231	Coil 22 Ø 8 BA 3.5VA-220VAC UR	220V 50/60Hz	5.3VA	3.5VA

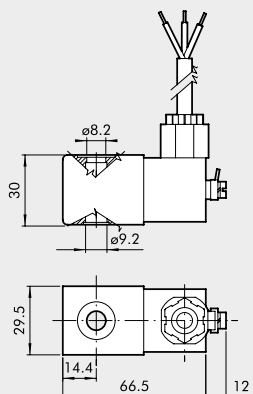


CONNECTOR FOR COILS SIDE 22 mm



Code	Tipo	Colour	Ø Cable
W0970510011	Standard	Black	PG9
W0970510012	LED 24V	Transparent	PG9
W0970510013	LED 110V	Transparent	PG9
W0970510014	LED 220V	Transparent	PG9
W0970510015	LED + VDR 24V	Transparent	PG9
W0970510016	LED + VDR 110V	Transparent	PG9
W0970510017	LED + VDR 220V	Transparent	PG9
W0970510070	Atex II 2 GD	Black	PG9

KIT COIL EEXM



Code	Description
0227606913	Kit for coil 30 24VDC EEXMT5 cable 3 m
0227606915	Kit for coil 30 24VDC EEXMT5 cable 5 m
0227608013	Kit for coil 30 24VAC EEXMT5 cable 3 m
0227608015	Kit for coil 30 24VAC EEXMT5 cable 5 m
0227608023	Kit for coil 30 110VAC EEXMT5 cable 3 m
0227608025	Kit for coil 30 110VAC EEXMT5 cable 5 m
0227608033	Kit for coil 30 230VAC EEXMT5 cable 3 m
0227608035	Kit for coil 30 230VAC EEXMT5 cable 5 m

According to Atex 2014/34/EU rule: Ex II 2G Ex mb IIC T4/T5 Gb
 Ex II 2D Ex tb IIC T130/T95 °C IP66 Db

N.B.: Supplied complete with adapter for Ø 8 mm sleeve.

N.B.: It's not possible to mount valves having these coils on bases or on manifolds, because the width of 29.5 mm is higher than the distance between the valves. Special bases can be manufactured on request.

KIT COILS SIDE 22 IP65



Code	Description
0222100100	Kit for coils 22 - IP65

Improved IP65 protection, even after prolonged exposure to atmospheric agents.
Applicable to valves with a technopolymer control.