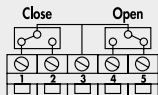
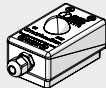


ACCESSORIES PARTS FOR ACTUATED VALVES SERIES RV-FLUID

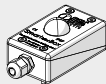
SWITCH BOX WITH ELECTROMECHANICAL MICROSWITCHES FOR ACTUATOR



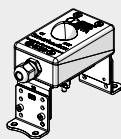
Voltage: max 125/250 VAC
 Current: min 30 mA
 max 2.5 A
 Temperature: -25°C to +125°C
 Charge: IP67



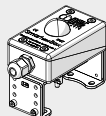
Code	Description	Weight [g]
W0900300915	Switch box with electromechanical microswitches for actuator bore 32	196



W0900300916	Switch box with electromechanical microswitches for actuator bore 42 - 63	152
-------------	---	-----



W0900300917	Switch box with electromechanical microswitches for actuator bore 115 - 145	384
-------------	---	-----



W0900300919	Switch box with electromechanical microswitches for actuator bore 75 - 100	384
-------------	--	-----

Note: switch boxes with inductive sensors and Atex certification are available on request.

POSITION INDICATOR FOR ACTUATOR



Code	Description	Weight [g]
W0900300930	Position indicator for actuator bore 32 - 63	16



W0900300931	Position indicator for actuator bore 75 - 100	22
-------------	---	----



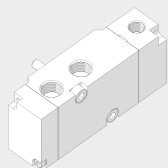
W0900300933	Position indicator for actuator bore 32 - 100 (only without switch box)	52
-------------	---	----



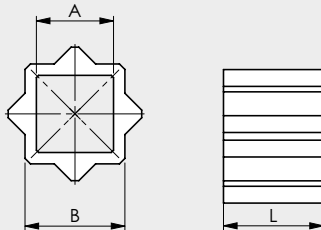
W0900300932	Position indicator for actuator bore 115 - 145	26
-------------	--	----

CONTROL VALVES WITH NAMUR INTERFACE

Refer to page B1.47



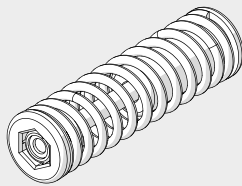
KIT SQUARED ADAPTOR



Code	Description	A	B	L	Weight [g]
W0900301001	Kit squared adaptor RV-FLUID 08/11	8	11	12	7
W0900301002	Kit squared adaptor RV-FLUID 09/11	9	11	12	6
W0900301006	Kit squared adaptor RV-FLUID 09/13	9	13	12	11
W0900301007	Kit squared adaptor RV-FLUID 11/13	11	13	12	7
W0900301008	Kit squared adaptor RV-FLUID 11/14	11	14	16	13
W0900301003	Kit squared adaptor RV-FLUID 14/17	14	17	17	19
W0900301005	Kit squared adaptor RV-FLUID 14/22	14	22	22	65
W0900301009	Kit squared adaptor RV-FLUID 16/22	16	22	22	52
W0900301004	Kit squared adaptor RV-FLUID 17/22	17	22	22	48

Note: adaptors according to ISO 5211 - DIN 3337 in AISI 316 stainless steel

SPRINGS KIT FOR SINGLE-ACTING VERSION

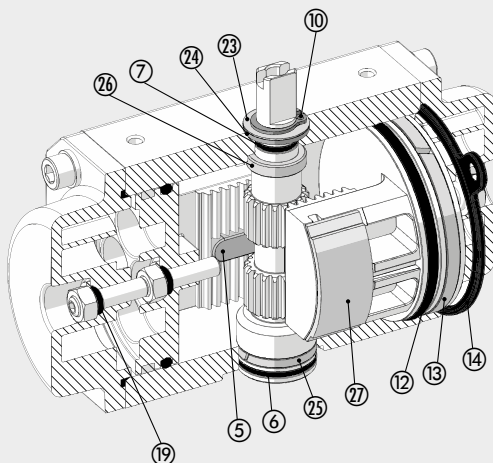


Code	Ø	Quantity per kit
W0900303002	42	8
W0900303003	50	12
W0900303004	63	12
W0900303005	75	12
W0900303006	85	12
W0900303007	100	12
W0900303008	115	12
W0900303009	125	12
W0900303010	145	12

Note: the springs are supplied pre-compressed with a special support to facilitate installation. Do not remove the spring from its support for any reason whatsoever.

SPARES PARTS FOR ACTUATED VALVES SERIES RV-FLUID

GASKETS KIT AND SLIDING ELEMENTS



Code	Ø	Parts
W0900302001	32	6-7-10-12-13-14-19-23-24-25-26-27
W0900302002	42	5-6-7-10-12-13-14-19-23-24-25-26-27
W0900302003	50	5-6-7-10-12-13-14-19-23-24-25-26-27
W0900302004	63	5-6-7-10-12-13-14-19-23-24-25-26-27
W0900302005	75	5-6-7-10-12-13-14-19-23-24-25-26-27
W0900302006	85	5-6-7-10-12-13-14-19-23-24-25-26-27
W0900302007	100	5-6-7-10-12-13-14-19-23-24-25-26-27
W0900302008	115	5-6-7-10-12-13-14-19-23-24-25-26-27
W0900302009	125	5-6-7-10-12-13-14-19-23-24-25-26-27
W0900302010	145	5-6-7-10-12-13-14-19-23-24-25-26-27