

PROPORTIONAL PRECISION PRESSURE REGULATOR REGTRONIC SERIES

Proportional pressure regulators series REGTRONIC have the job of precisely regulating the pressure in a system, the variables depending on the input command. Remote control regulators are controlled by means of an M12x1 cable and connector and can have Volt, mA, RS232 control or via IO-Link. Regulators with a display can be controlled via a cable or directly using the keys below the display. The pressure value and a series of information and diagnostics are visible at all times on the graphic display.

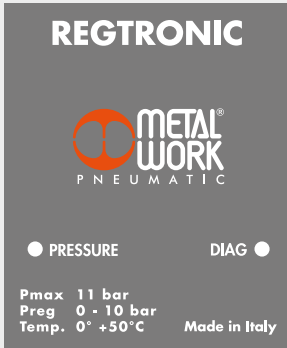
The user-display interface, LEDs and buttons are all on one side. The programming and reading software is comprehensive, simple and intuitive. Pressure control takes place in a "closed-loop" with an electronic precision pressure sensor that measures the downstream pressure, a control system that compares it with the desired pressure, and two mini solenoid valves that adjust the pressure to reach the target value.



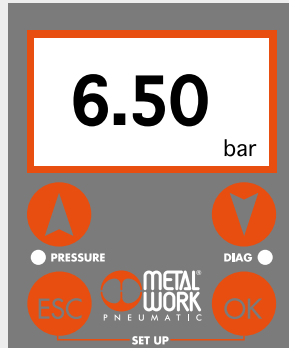
| TECHNICAL DATA | REGTRONIC | | | REGTRONIC NEW DEAL | | REGTRONIC 300 | | REGTRONIC 400 | | | | |
|--|--|------|------|--------------------|------|---------------|-------|---------------|------|--------|--------|------|
| | M5 | 1/8" | 1/4" | 3/4" | 1" | 1/2" | 3/4" | 1" | 1" | 1 1/4" | 1 1/2" | 2" |
| Threaded port | M5 1/8" 1/4" 3/4" 1" 1/2" 3/4" 1" 1" 1 1/4" 1 1/2" 2" | | | | | | | | | | | |
| Fluid | Filtered, unlubricated air. The air must be filtered at least 10 µm and without condensation. | | | | | | | | | | | |
| MIN inlet pressure | bar Regulation pressure + 1 bar | | | | | | | | | | | |
| MAX inlet pressure | bar 11 | | | | | | | | | | | |
| Temperature range | °C from 0 to 50 | | | | | | | | | | | |
| Pressure regulation range | bar from 0.05 to 10 (settable full scale and minimum pressure) | | | | | | | | | | | |
| Flow rate at 6.3 bar ΔP 0.5 | 10 | 1300 | 1500 | 10000 | 4500 | 18000 | 20000 | | | | | |
| Flow rate at 6.3 bar ΔP 1 | 10 | 1450 | 1700 | 13000 | 7000 | - | - | | | | | |
| Exhaust flow rate at 6.3 bar with 0.1 bar overpressure | 2 | 600 | 1300 | 1800 | 250 | 400 | 400 | | | | | |
| Exhaust flow rate at 6.3 bar with 0.5 bar overpressure | 9 | 1000 | 1500 | 2000 | 500 | 850 | 850 | | | | | |
| Response time with ΔP = 1 bar | 100 | 100 | 1000 | 100 | 1000 | 1000 | 1000 | 1000 | 1000 | 1000 | 1000 | 1000 |
| from 6 to 7 bar | 0.5 | 0.1 | 0.15 | 0.1 | 0.15 | 0.27 | 0.25 | 0.2 | 0.2 | 0.2 | 0.2 | 0.2 |
| from 7 to 6 bar | 0.55 | 0.1 | 0.15 | 0.1 | 0.15 | 0.27 | 0.33 | 0.35 | 0.35 | 0.35 | 0.35 | 0.35 |
| Weight | 0.2 | 0.38 | 0.38 | 1.3 | 1.5 | 5 | 5.8 | | | | | |
| Class of protection | IP 65 | | | | | | | | | | | |
| Supply voltage range IO-Link version | VDC from 18 to 30 | | | | | | | | | | | |
| Current absorption | Max 150 mA at 18VDC | | | | | | | | | | | |
| Supply voltage range analog version | VDC 12 -10% 24 +30% | | | | | | | | | | | |
| Minimum operating voltage | VDC 10.8 | | | | | | | | | | | |
| Maximum operating voltage | VDC 31.2 | | | | | | | | | | | |
| Maximum admissible voltage | VDC 32 * | | | | | | | | | | | |
| Current absorption | max 220 mA at 12VDC | | | | | | | | | | | |
| Input signal (input impedance) | Voltage 0 to 5 VDC, 0 to 10 VDC (approx. 6.3 KΩ) | | | | | | | | | | | |
| Current | 4 to 20 mA (approx. 100 Ω) | | | | | | | | | | | |
| Serial ports | RS 232 | | | | | | | | | | | |
| Manual | Keypad | | | | | | | | | | | |
| Output signal | Analog version voltage 0 to 10 VDC (1 VDC = 1 bar) - 1 mA max | | | | | | | | | | | |
| Analog version current | 4 to 20 mA (4 mA = 0 bar, 20 mA = 10 bar) | | | | | | | | | | | |
| Digital | PNP open collector output: max 24VDC 60 mA NPN open collector output: max 24VDC 60 mA | | | | | | | | | | | |
| Hysteresis | ± 0.2% (Full scale) | | | | | | | | | | | |
| Repeatability | ± 0.2% (Full scale) | | | | | | | | | | | |
| Sensitivity/Dead-band | setting range 10 to 300 mbar | | | | | | | | | | | |
| Output pressure (display version) | Accuracy ± 0.3% (Full scale) | | | | | | | | | | | |
| Unit of measurement | bar, MPa, psi | | | | | | | | | | | |
| Minimum resolution | 0.01 bar - 0.001 MPa - 0.01 psi | | | | | | | | | | | |
| Analog output accuracy | ± 0.1% of the reading | | | | | | | | | | | |
| Temperature characteristics | max 2 mbar / °C | | | | | | | | | | | |
| Installation position | In any position | | | | | | | | | | | |
| Notes | The features shown refer to the static condition only. With air consumption on the output side, the pressure may vary. On all analog versions you can set the parameters using the software "MWRegtronic" downloadable from the website www.metalwork.eu ; to connect the PC to Regtronic you can use the cable code W0970513019. | | | | | | | | | | | |

* IMPORTANT! Voltage greater than 32VDC will damage the system irreparably.

REMOTE-CONTROL VERSION



DISPLAY VERSION



PROGRAMMABLE AND FLEXIBLE

Setting options:

- LANGUAGE
- UNIT OF MEASUREMENT
- TYPE OF INPUT
- TYPE OF DIGITAL OUTPUT
- DEAD-BAND
- FULL SCALE
- MINIMUM PRESSURE

The remote-control version of the Regtronic has two diagnostic LEDs.

The display version also has buttons for entering the various parameters.

PRECISION

Linearity
± 0.5 % (full scale)

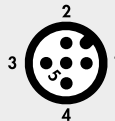
Hysteresis
± 0.2 % (full scale)

Repeatability
± 0.2 % (full scale)

Sensitivity
range 10 to 300 mbar

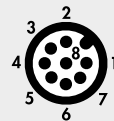
IO-Link CONNECTOR 5-PIN M12x1

IO-Link



| Pin | Signal | Description of Class A Port | Lead colour |
|-----|--------|-----------------------------|-------------|
| 1 | L+ | +24 VDC power supply | Brown |
| 2 | NC | / | White |
| 3 | L- | 0 VDC power supply | Blue |
| 4 | C/Q | IO-Link communication | Black |
| 5 | NC | / | Gray |

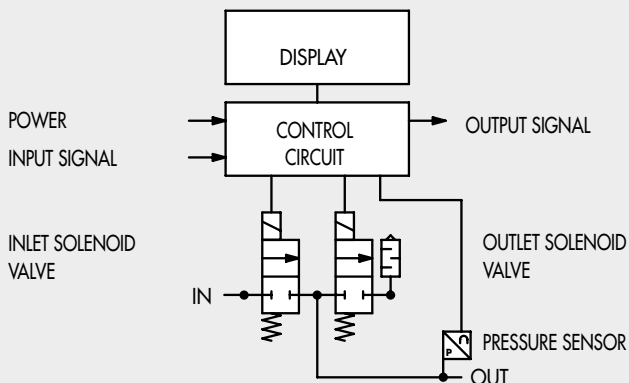
ANALOG CONNECTOR 8-PIN M12x1



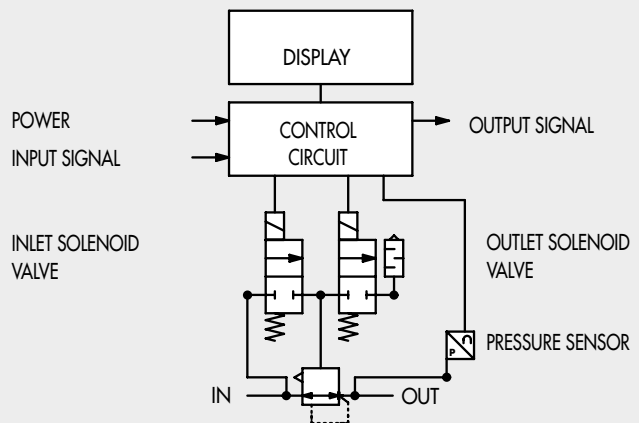
| Pin | Signal | Description | Lead colour |
|-----|--------------|---|-------------|
| 1 | TX | RS232 | White |
| 2 | RX | RS232 | Brown |
| 3 | Pressure set | 0 to 10 VDC / 0 to 5 VDC / 4 to 20 mA | Green |
| 4 | Digital out | NPN | Yellow |
| 5 | Analog out | Voltage version 0 to 10 VDC Current version 4 to 20 mA | Gray |
| 6 | Digital out | PNP | Pink |
| 7 | 0 VDC | Power supply | Blue |
| 8 | + VDC | Power supply | Red |

FUNCTION DIAGRAM

REGTRONIC M5



REGTRONIC 1/8" - 1/4" - SK300 - SK400 - NEW DEAL

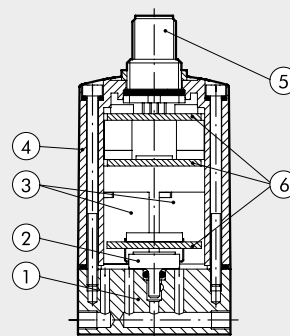


REGTRONIC M5

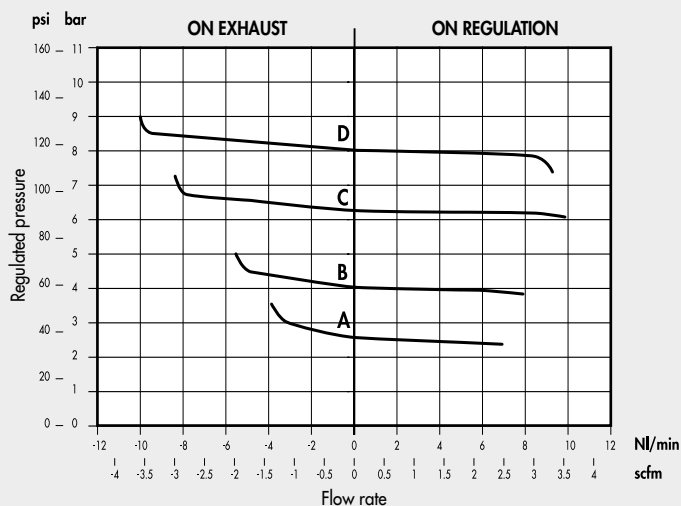
COMPONENTS



- ① BODY: painted aluminium
- ② PRESSURE SENSOR
- ③ SOLENOID VALVE: 10 mm series PLT-10
- ④ SHELL: technopolymer
- ⑤ CONNECTOR M12
- ⑥ ELECTRONIC BOARDS

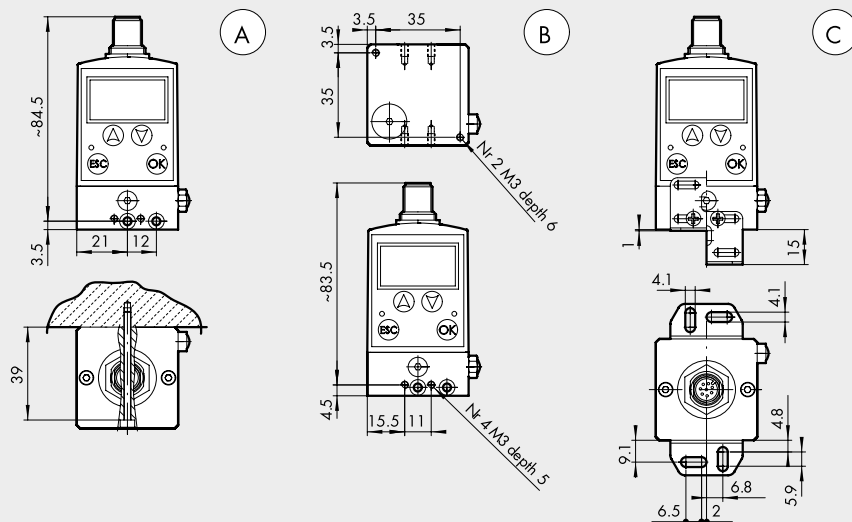


FLOW CHARTS



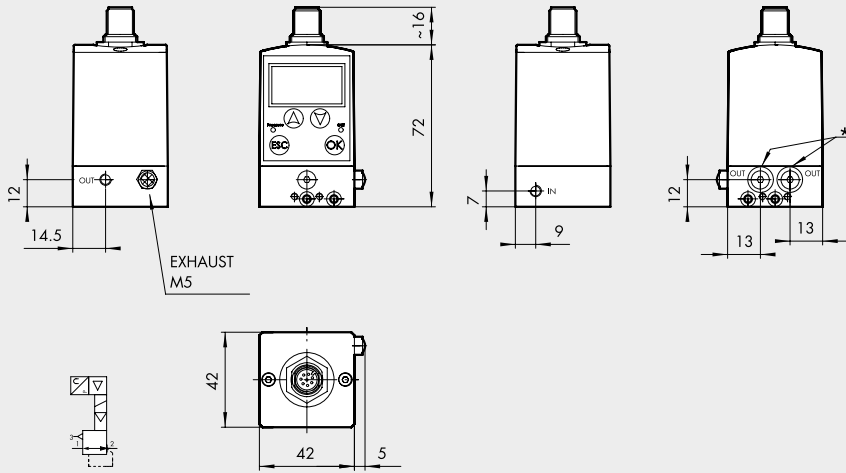
- A = 2.5 bar
- B = 4 bar
- C = 6.3 bar
- D = 8 bar
- Pm = 10 bar

FIXING OPTIONS



- Ⓐ On the wall with 2 M3 screws, with through holes
- Ⓑ On the wall using the M3 threaded holes on the front, rear and underside
- Ⓒ On the wall with legs code 9200711

DIMENSIONS AND ORDERING CODES



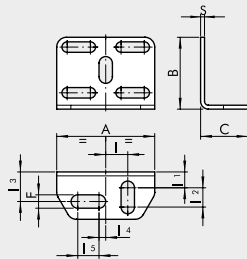
| Code | Description |
|---------|---|
| 5520500 | REGTRONIC M5 with display OUT 0-10 V |
| 5520502 | REGTRONIC M5 remote control OUT 0-10 V |
| 5540500 | REGTRONIC M5 with display OUT 4-20 mA |
| 5540502 | REGTRONIC M5 remote control OUT 4-20 mA |

| | |
|---------|-------------------------------------|
| 5530500 | REGTRONIC IO-Link M5 with display |
| 5530502 | REGTRONIC IO-Link M5 remote control |

* alternative outputs, removing the M5 cap

ACCESSORIES

FIXING BRACKET KIT



| Code | Description | | | | | | | | | |
|----------|---------------------------------|----------|----------|----------|-----------|-----------|-----------|-----------|-----------|----------|
| 9200711 | Regtronic M5 Fixing bracket kit | | | | | | | | | |
| A | B | C | F | I | I1 | I2 | I3 | I4 | I5 | S |
| 30 | 22 | 14.5 | 4.2 | 6.8 | 4.8 | 5.9 | 9.1 | 2 | 6.5 | 1.2 |

Note: supplied complete with four M3x6 screws

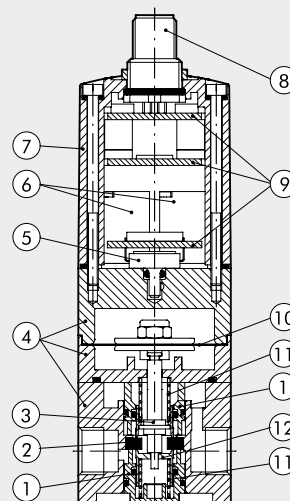
NOTES

REGTRONIC 1/8"; 1/4"

COMPONENTS

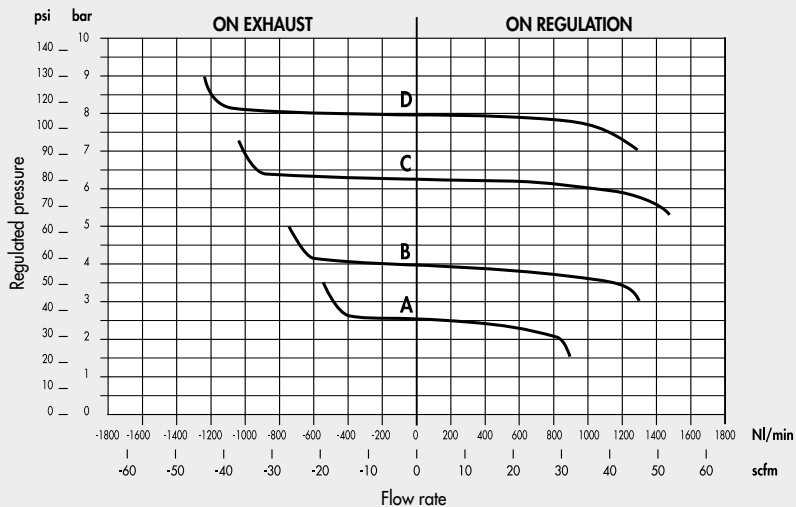


- ① CARTRIDGES: nickel-plated brass
- ② RING: vulcanized NBR
- ③ ROD: steel
- ④ BODIES: painted aluminium
- ⑤ PRESSURE SENSOR
- ⑥ SOLENOID VALVE: 10 mm series PLT-10
- ⑦ SHELL: technopolymer
- ⑧ CONNECTOR M12
- ⑨ ELECTRONIC BOARDS
- ⑩ CONTROL DIAPHRAGM: anti-oil rubber
- ⑪ SPRING: stainless steel
- ⑫ POPPET: nickel-plated brass



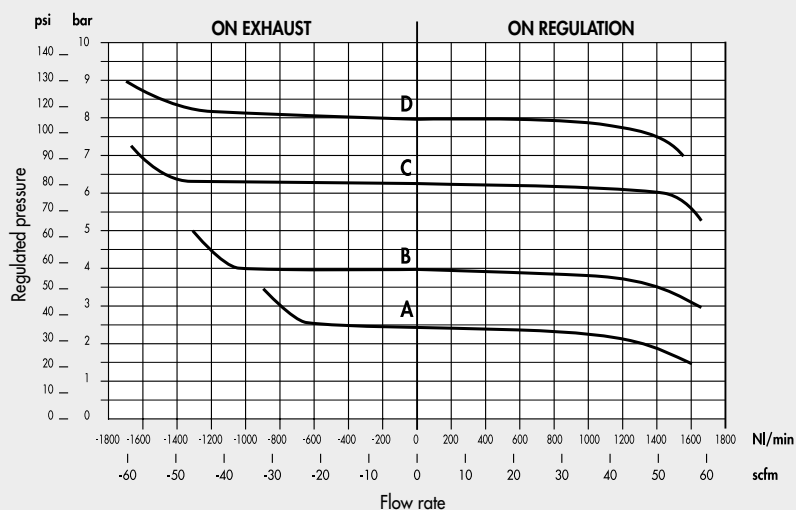
FLOW CHARTS

REGTRONIC 1/8"



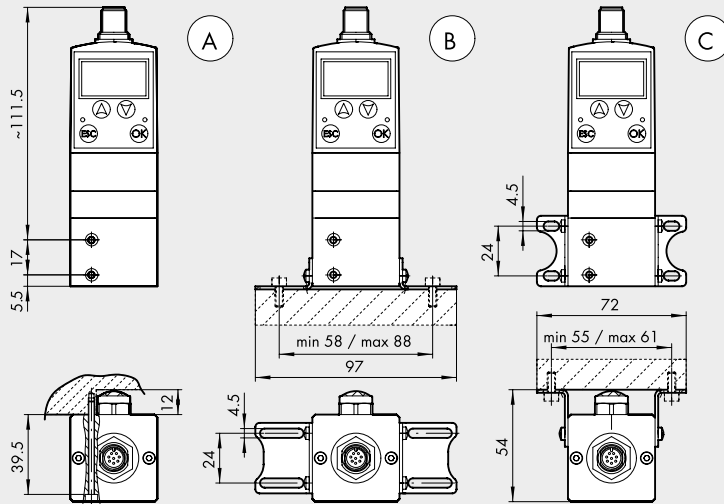
A = 2.5 bar
 B = 4 bar
 C = 6.3 bar
 D = 8 bar
 Pm = 10 bar

REGTRONIC 1/4"



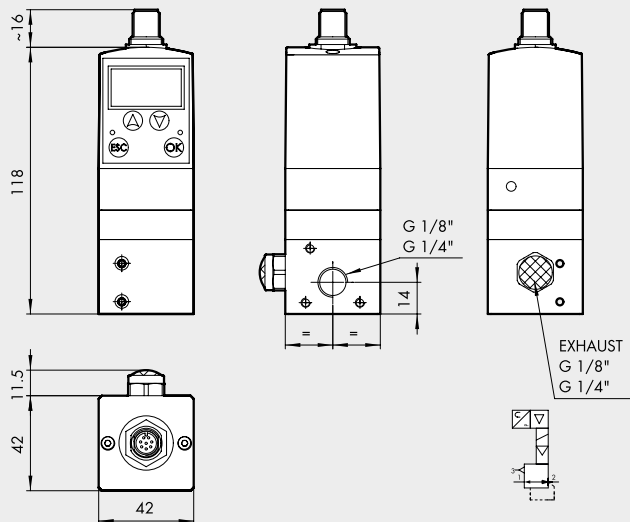
A = 2.5 bar
 B = 4 bar
 C = 6.3 bar
 D = 8 bar
 Pm = 10 bar

FIXING OPTIONS



- Ⓐ On the wall with 2 M3 screws
- Ⓑ On the base with legs code 9200710
- Ⓒ On the wall with legs code 9200710

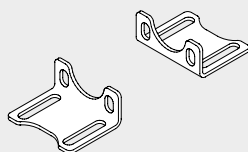
DIMENSIONS AND ORDERING CODES



| Code | Description |
|---------|--|
| 5521500 | REGTRONIC 1/8 with display OUT 0-10 V |
| 5521502 | REGTRONIC 1/8 remote control OUT 0-10 V |
| 5522500 | REGTRONIC 1/4 with display OUT 0-10 V |
| 5522502 | REGTRONIC 1/4 remote control OUT 0-10 V |
| 5541500 | REGTRONIC 1/8 with display OUT 4-20 mA |
| 5541502 | REGTRONIC 1/8 remote control OUT 4-20 mA |
| 5542500 | REGTRONIC 1/4 with display OUT 4-20 mA |
| 5542502 | REGTRONIC 1/4 remote control OUT 4-20 mA |
| 5531500 | REGTRONIC IO-Link 1/8 with display |
| 5531502 | REGTRONIC IO-Link 1/8 remote control |
| 5532500 | REGTRONIC IO-Link 1/4 with display |
| 5532502 | REGTRONIC IO-Link 1/4 remote control |

ACCESSORIES

FIXING BRACKET KIT



| Code | Description |
|---------|--------------------|
| 9200710 | Fixing bracket kit |

Note: supplied complete with four M4x6 screws

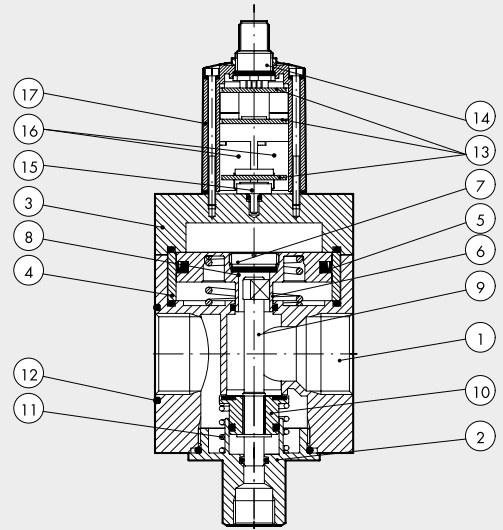
NOTES

REGTRONIC New deal

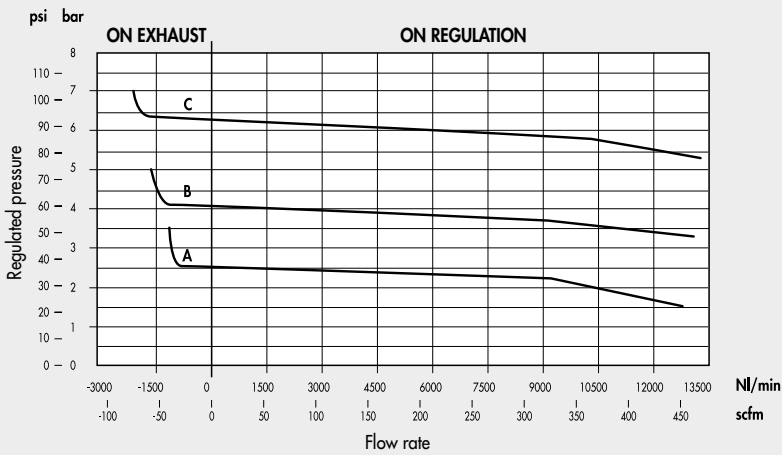


COMPONENTS

- ① REGULATOR BODY: aluminium
- ② LOWER CAP: aluminium
- ③ UPPER PLATE: aluminium
- ④ SPACER: aluminium
- ⑤ GASKET: NBR
- ⑥ PISTON ROD: aluminium
- ⑦ CAP FOR PLAIN GASKET: OT58 brass
- ⑧ PLAIN GASKET: NBR
- ⑨ ROD: OT58 brass
- ⑩ VALVE: OT58 brass
- ⑪ VALVE SPRING: steel
- ⑫ GASKETS: NBR
- ⑬ ELECTRONIC BOARDS
- ⑭ CONNECTOR M12
- ⑮ PRESSURE SENSOR
- ⑯ SOLENOID VALVE: 10 mm series PLT-10
- ⑰ SHELL: tecnopolymer

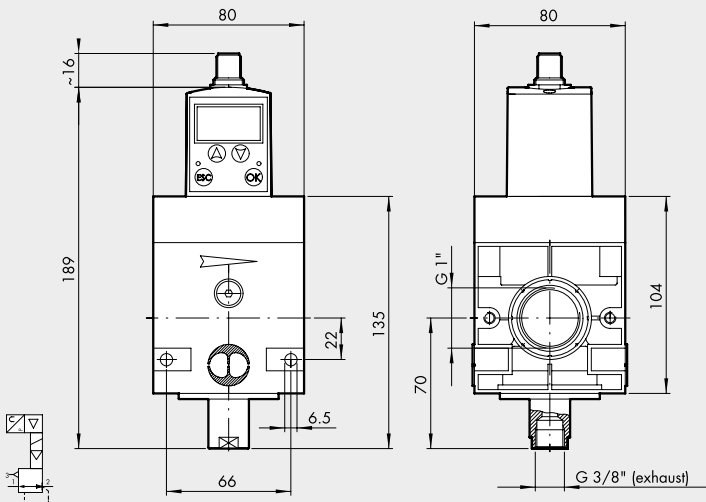


FLOW CHARTS



A = 2.5 bar
 B = 4 bar
 C = 6.3 bar
 Pm = 10 bar

DIMENSIONS AND ORDERING CODES



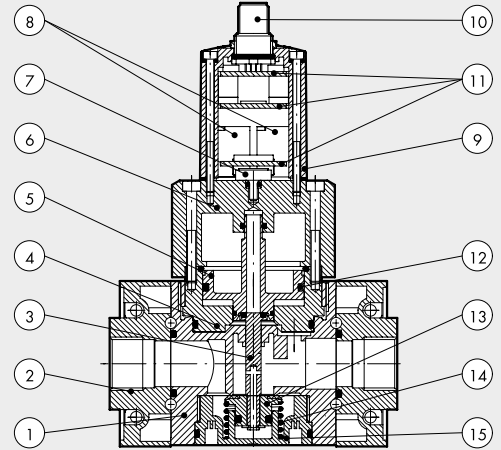
| Code | Description |
|---------|---|
| 1520003 | REGTRONIC New Deal 3/4 with display OUT 0-10 V |
| 1520004 | REGTRONIC New Deal 3/4 remote control OUT 0-10 V |
| 1620003 | REGTRONIC New Deal 1 with display OUT 0-10 V |
| 1620004 | REGTRONIC New Deal 1 remote control OUT 0-10 V |
| 1520043 | REGTRONIC New Deal 3/4 with display OUT 4-20 mA |
| 1520044 | REGTRONIC New Deal 3/4 remote control OUT 4-20 mA |
| 1620043 | REGTRONIC New Deal 1 with display OUT 4-20 mA |
| 1620044 | REGTRONIC New Deal 1 remote control OUT 4-20 mA |
| 1520033 | REGTRONIC IO-Link New Deal 3/4 with display |
| 1520034 | REGTRONIC IO-Link New Deal 3/4 remote control |
| 1620033 | REGTRONIC IO-Link New Deal 1 with display |
| 1620034 | REGTRONIC IO-Link New Deal 1 remote control |

REGTRONIC 300

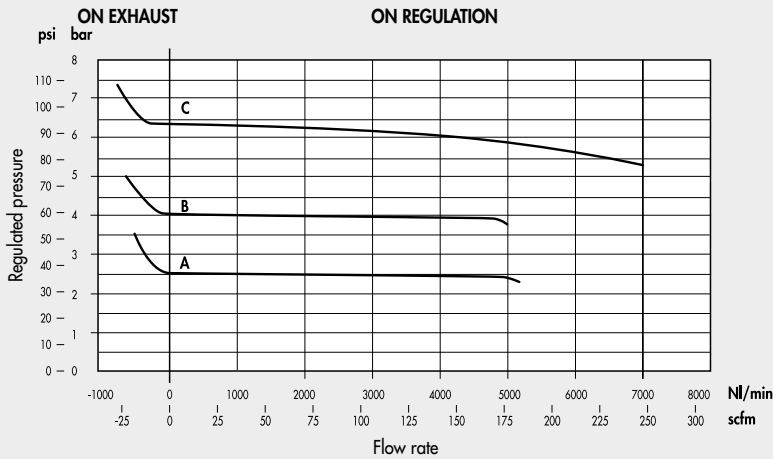
COMPONENTS



- ① BODY: tecnopolymer
- ② END PLATE: zamak
- ③ STEM: OT58 brass
- ④ UPPER CUP: aluminium
- ⑤ PISTON: OT58 brass
- ⑥ CUP: aluminium
- ⑦ PRESSURE SENSOR
- ⑧ SOLENOID VALVE: 10 mm series PLT-10
- ⑨ SHELL: tecnopolymer
- ⑩ CONNECTOR M12
- ⑪ ELECTRONIC BOARDS
- ⑫ GASKET: NBR
- ⑬ VALVE WITH NBR VULCANIZED GASKET
- ⑭ VALVE SPRING: stainless steel
- ⑮ LOWER CUP: tecnopolymer

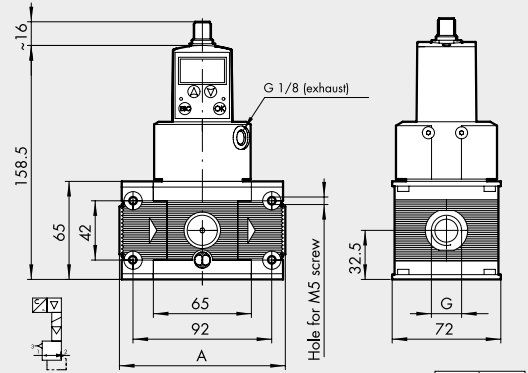


FLOW CHARTS



A = 2.5 bar B = 4 bar C = 6.3 bar Pm = 10 bar

DIMENSIONS



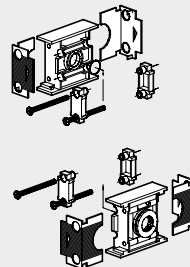
| G | A |
|------|-----|
| 1/2" | 110 |
| 3/4" | 110 |
| 1" | 112 |

ORDERING CODES

| Code | Description |
|----------|---|
| 4402012A | REGTRONIC 300 with display without end plates OUT 0-10 V |
| 4402013A | REGTRONIC 300 remote control without end plates OUT 0-10 V |
| 4402012 | REGTRONIC 300 1/2 with display OUT 0-10 V |
| 4402013 | REGTRONIC 300 1/2 remote control OUT 0-10 V |
| 4502012 | REGTRONIC 300 3/4 with display OUT 0-10 V |
| 4502013 | REGTRONIC 300 3/4 remote control OUT 0-10 V |
| 4602012 | REGTRONIC 300 1 with display OUT 0-10 V |
| 4602013 | REGTRONIC 300 1 remote control OUT 0-10 V |
| 4402412A | REGTRONIC 300 with display without end plates OUT 4-20 mA |
| 4402413A | REGTRONIC 300 remote control without end plates OUT 4-20 mA |
| 4402412 | REGTRONIC 300 1/2 with display OUT 4-20 mA |
| 4402413 | REGTRONIC 300 1/2 remote control OUT 4-20 mA |
| 4502412 | REGTRONIC 300 3/4 with display OUT 4-20 mA |
| 4502413 | REGTRONIC 300 3/4 remote control OUT 4-20 mA |
| 4602412 | REGTRONIC 300 1 with display OUT 4-20 mA |
| 4602413 | REGTRONIC 300 1 remote control OUT 4-20 mA |
| 4402312A | REGTRONIC IO-Link 300 with display without end plates |
| 4402313A | REGTRONIC IO-Link 300 remote control without end plates |
| 4402312 | REGTRONIC IO-Link 300 1/2 with display |
| 4402313 | REGTRONIC IO-Link 300 1/2 remote control |
| 4502312 | REGTRONIC IO-Link 300 3/4 with display |
| 4502313 | REGTRONIC IO-Link 300 3/4 remote control |
| 4602312 | REGTRONIC IO-Link 300 1 with display |
| 4602313 | REGTRONIC IO-Link 300 1 remote control |

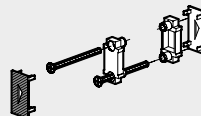
ACCESSORIES

INPUT/OUTPUT END PLATE KIT FOR SKILLAIR



| Code | Description |
|---------|-------------------------------|
| 9430701 | IN/OUT end plates kit 300 1/2 |
| 9530901 | IN/OUT end plates kit 300 3/4 |
| 9531001 | IN/OUT end plates kit 300 1 |

CONNECTOR KIT FOR SKILLAIR CODE A



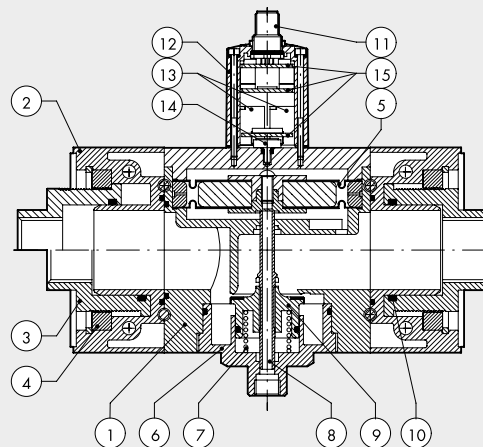
| Code | Description |
|---------|-------------------|
| 9430301 | Connector kit 300 |

REGTRONIC 400



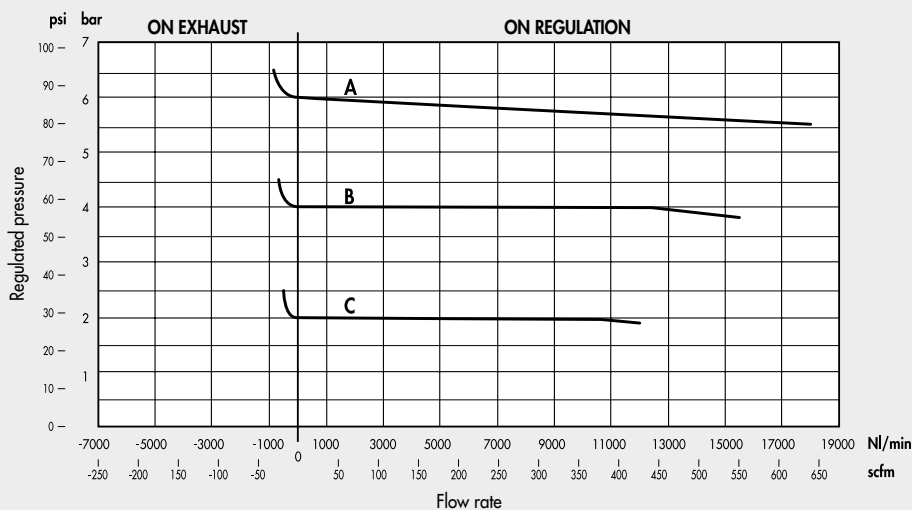
COMPONENTS

- ① BODY: Aluminium
- ② END PLATE: Aluminium
- ③ THREADED BUSH, AXIAL
ADJUSTMENT: anodized aluminium
- ④ RETAINING RING: OT58 brass
- ⑤ ROLLING DIAPHRAGM
- ⑥ BRASS PLUG: anodized aluminium
- ⑦ VALVE SPRING: Stainless steel
- ⑧ STEM: OT58 brass with air relief hole
- ⑨ VALVE WITH NBR VULCANIZED GASKET
- ⑩ GASKETS: NBR
- ⑪ CONNECTOR M12
- ⑫ SHELL: technopolymer
- ⑬ SOLENOID VALVE: 10 mm series PLT-10
- ⑭ PRESSURE SENSOR
- ⑮ ELECTRONIC BOARDS



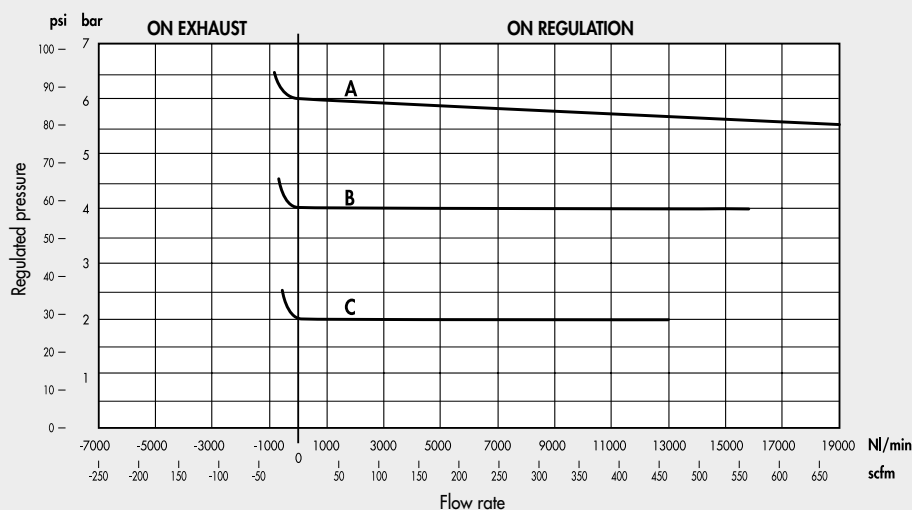
FLOW CHARTS

REGTRONIC 400 1" to 1 1/2"



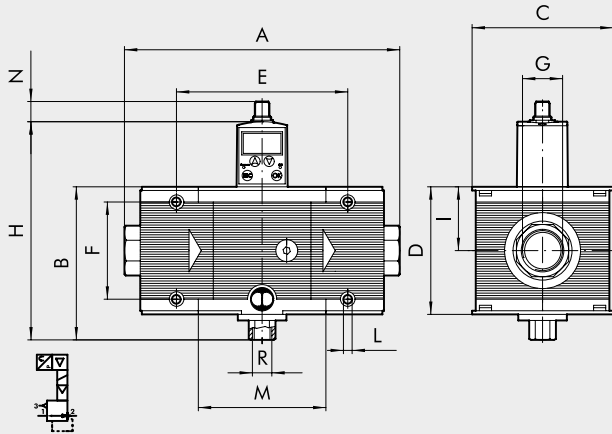
A = 6 bar
B = 4 bar
C = 2 bar
Pm = 7 bar

REGTRONIC 400 2"



A = 6 bar
B = 4 bar
C = 2 bar
Pm = 7 bar

DIMENSIONS



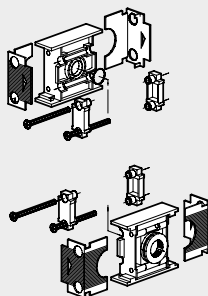
| Threaded port G | REGTRONIC 400 | | | |
|-----------------|---------------|------------|--------------------|------------|
| | 1" | 1 1/4" | 1 1/2" | 2" |
| A | | 225 to 255 | | 283 to 313 |
| B | | | 127 | |
| C | | | 116 | |
| D | | | 105 | |
| E | | | 141.4 | |
| F | | | 80 | |
| G | 1" | 1 1/4" | 1 1/2" | 2" |
| H | | | 182 | |
| I | | | 52.5 | |
| L | | | Hole for M6 screws | |
| M | | | 105.4 | |
| N | | | ~16 | |
| R (exhaust) | | | 1/4" | |

ORDERING CODES

| Code | Description | Code | Description |
|----------|---|----------|---|
| 6102012A | REGTRONIC 400 with display without end plates OUT 0-10 V | 6102312A | REGTRONIC IO-Link 400 with display without end plates |
| 6102013A | REGTRONIC 400 control remote without end plates OUT 0-10 V | 6102313A | REGTRONIC IO-Link 400 remote control without end plates |
| 6102012 | REGTRONIC 400 1 with display OUT 0-10 V | 6102312 | REGTRONIC IO-Link 400 1 with display |
| 6102013 | REGTRONIC 400 1 control remote OUT 0-10 V | 6102313 | REGTRONIC IO-Link 400 1 remote control |
| 6202012 | REGTRONIC 400 1 1/4 with display OUT 0-10 V | 6202312 | REGTRONIC IO-Link 400 1 1/4 with display |
| 6202013 | REGTRONIC 400 1 1/4 control remote OUT 0-10 V | 6202313 | REGTRONIC IO-Link 400 1 1/4 remote control |
| 6302012 | REGTRONIC 400 1 1/2 with display OUT 0-10 V | 6302312 | REGTRONIC IO-Link 400 1 1/2 with display |
| 6302013 | REGTRONIC 400 1 1/2 control remote OUT 0-10 V | 6302313 | REGTRONIC IO-Link 400 1 1/2 remote control |
| 6402012 | REGTRONIC 400 2 with display OUT 0-10 V | 6402312 | REGTRONIC IO-Link 400 2 with display |
| 6402013 | REGTRONIC 400 2 control remote OUT 0-10 V | 6402313 | REGTRONIC IO-Link 400 2 remote control |
| 6102412A | REGTRONIC 400 with display without end plates OUT 4-20 mA | | |
| 6102413A | REGTRONIC 400 control remote without end plates OUT 4-20 mA | | |
| 6102412 | REGTRONIC 400 1 with display OUT 4-20 mA | | |
| 6102413 | REGTRONIC 400 1 control remote OUT 4-20 mA | | |
| 6202412 | REGTRONIC 400 1 1/4 with display OUT 4-20 mA | | |
| 6202413 | REGTRONIC 400 1 1/4 control remote OUT 4-20 mA | | |
| 6302412 | REGTRONIC 400 1 1/2 with display OUT 4-20 mA | | |
| 6302413 | REGTRONIC 400 1 1/2 control remote OUT 4-20 mA | | |
| 6402412 | REGTRONIC 400 2 with display OUT 4-20 mA | | |
| 6402413 | REGTRONIC 400 2 control remote OUT 4-20 mA | | |

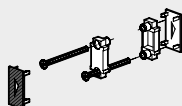
ACCESSORIES

INPUT/OUTPUT END PLATE KIT FOR SKILLAIR



| Code | Description |
|---------|---------------------------------|
| 9631001 | IN/OUT end plates kit 400 1 |
| 9631101 | IN/OUT end plates kit 400 1 1/4 |
| 9631201 | IN/OUT end plates kit 400 1 1/2 |
| 9631301 | IN/OUT end plates kit 400 2 |

CONNECTOR KIT FOR SKILLAIR CODE A



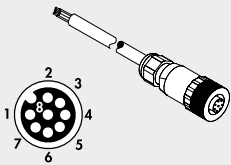
| Code | Description |
|---------|-------------------|
| 9630301 | Connector kit 400 |

ACCESSORIES REGTRONIC

ANALOG VERSION

IO-Link VERSION

CONNECTOR M12x1, 8-PIN, A-CODED, FEMALE, STRAIGHT

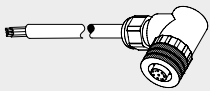


Code W0970513010
Description Connector M12x1, 8-pin, A-coded, female, straight, with cable L = 5 m

Note: can only be used for analog version

| Pin | Cable color |
|-----|-------------|
| 1 | White |
| 2 | Brown |
| 3 | Green |
| 4 | Yellow |
| 5 | Grey |
| 6 | Pink |
| 7 | Blue |
| 8 | Red |

CONNECTOR M12x1, 8-PIN, A-CODED, FEMALE, 90°, WITH CABLE

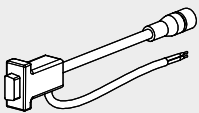


Code W0970513011
Description Connector M12x1, 8-pin, A-coded, female, 90°, with cable L = 5 m

Note: can only be used for analog version

| Pin | Cable color |
|-----|-------------|
| 1 | White |
| 2 | Brown |
| 3 | Green |
| 4 | Yellow |
| 5 | Grey |
| 6 | Pink |
| 7 | Blue |
| 8 | Red |

CONFIGURATION CABLE



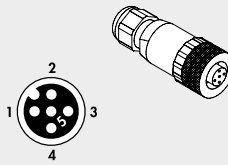
Code W0970513019
Description Configuration cable Regtronic

The cable consists of:
 - M12 8-PIN female connector to be connected to Regtronic
 - RS232 serial connector to be connected to PC
 - 2 wires to supply 24VDC power
 The package also includes a RS232-USB adapter

Note: can only be used for analog version

NOTES

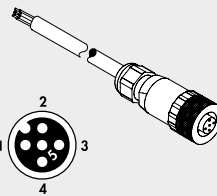
CONNECTOR M12x1, 5-PIN, A-CODED, FEMALE, STRAIGHT



Code W0970513001
Description Connector M12x1, 5-pin, A-coded, female, straight

Note: can only be used for version IO-Link

CONNECTOR M12x1, 5-PIN, A-CODED, FEMALE, STRAIGHT



Code W0970513002
Description Connector M12x1, 5-pin, A-coded, female, straight, with cable L = 5 m

Note: can only be used for version IO-Link

| Pin | Cable color |
|-----|-------------|
| 1 | Brown |
| 2 | White |
| 3 | Blue |
| 4 | Black |
| 5 | Gray |

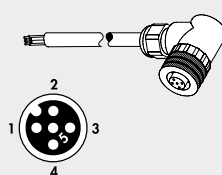
CONNECTOR M12x1, 5-PIN, A-CODED, FEMALE, 90°



Code W0970513003
Description Connector M12x1, 5-pin, A-coded, female, 90°

Note: can only be used for version IO-Link

CONNECTOR M12x1, 5-PIN, A-CODED, FEMALE, 90°, WITH CABLE



Code W0970513004
Description Connector M12x1, 5-pin, A-coded, female, 90°, with cable L = 5 m

Note: can only be used for version IO-Link

| Pin | Cable color |
|-----|-------------|
| 1 | Brown |
| 2 | White |
| 3 | Blue |
| 4 | Black |
| 5 | Gray |